



CHAMBER OF COMMERCE HAPPENINGS

Promoting and celebrating the businesses and organizations of the Souhegan Valley.



*You can find it
in the
Souhegan Valley.*

Red Sox Hall of Famer, Rico Petrocelli to Keynote Expo Opening

Determination, commitment and strong values guided Rico Petrocelli through life from baseball great to manager in the Red Sox organization to devoted family man. Born and raised in Brooklyn, New York, Rico Petrocelli started in two All-Star teams and was known for being one of the league's best fielders for over a decade. This was the era of baseball long before the shadow of steroids clouded the sport when heroes didn't have an asterisk after their name. He knows what it means to work hard, never give up and the rewards that brings. The message he will share with the students and business people in his keynote at the opening of the Southern New Hampshire Expo comes from this experience. Strength of character and honest relationships, it is a positive one for personal success.



continued on Page 10

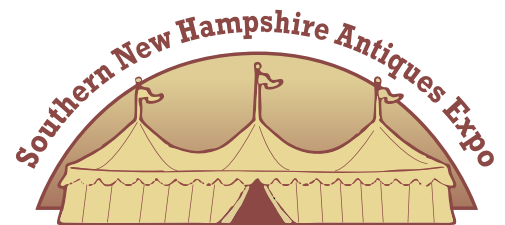
Southern NH Expo All the Best of Souhegan and Beyond Under the Hampshire Dome

What is in a name? A change that will bring all the best that is the Souhegan Valley and well beyond under one big tent – the Hampshire Dome on Emerson Road in Milford, October 22. The Expo this year is a no-holds-barred event to include limitless opportunities for the citizens and businesses in southern New Hampshire and northern Massachusetts. The target area is not limited to a city or county. The Exhibitors and the Expo attendees are the consumers who regularly travel throughout the region for their goods and service needs and the providers that want their business! Major event sponsor, Wal-Mart, will be distributing reusable shopping bags to the first 1,000 in attendance.

Souhegan Valley Chamber of Commerce is proud to partner with neighboring chambers

continued on Page 7

Southern New Hampshire Antique Expo at Hamp- shire Dome



UNDER THE HAMPSHIRE DOME

Rich in history, the southern region of New Hampshire can boast to being home to many beautiful villages, historic landmarks and birthplace for many of our country's famous citizens. October 23 and 24, it will be the site of the Southern New Hampshire Antique Expo. Long regarded as the center of the Antique World with the highest concentration of shops and dealers in the country, this Expo will draw from all over New England and beyond for a premier show at the Hampshire

continued on Page 7

Executive Board

Effective July 1, 2008

Rick Boyd – Chairman
Beard & Boyd Insurance Agency

Amy Wheeler – Chair-Elect
First Colebrook Bank

Karen Keating – Treasurer
St. Mary's Bank

Clifford Harris – Past Chairman
Prudential Verani Commercial

Richard Mori
Mori Books

May Balsama –
Executive Director

Board of Directors

Joseph Maiona
Maiona Law, PLLC

Jeffrey Boutin
The Boutin Financial Group

Michael Brisebois
Hitchiner Manufacturing Co.

Steve Carter
Williams & Hussey

John Cifrino
Postal Center USA

Mark Constable
Constable Agency Nationwide
Insurance

Rick Holder
Hampshire Hills

Gail Hoar
Wilton Main Street Assoc.

Laurie Johnson
SAU #40

Mary Kling
Wendi's Cleaning Service

Stephanie Kruey
Ocean Bank

Ingrid Rahaim
PSNH

Guy Scaife
Town of Milford

Cliff Simmonds
Beaver Brook Assoc.

Jackie Staiti
Amanda Thomas Women's
Boutique

Marc Violette
TDS Telecom

Message From May's Desk:

Did you know Will Moses (grandson of Grandma Moses) is one of my favorite artists? One Christmas, our children pooled their resources to present us with two of his signed prints. I treasure them for the thoughtfulness and for spirit I find in the pieces. I can stand and gaze and imagine the warmth and wholesomeness of the villages that is portrayed. The quality of life, not the activities, is what I find most meaningful in the prints and what draws me into them. Quality of life. Down to earth, honest, reliable, solid – words that come to mind when I think about the scenes. The same words that come to mind when I think about the Souhegan Valley “stars” of the Readers Choice Awards.



We have great businesses in our region. It is a wonderful opportunity that the Cabinet Press and their parent company, The Telegraph gives us to recognize these businesses through the Readers Choice Awards each year. There are significant aspects to the whole process of the awards. One is the remarkable growth in the number of voters. The awards started only three years ago thanks to the support of David Solomon, Executive Editor of the Telegraph. David was and is committed to the towns the four community papers serve. From that first year, the enthusiasm of the readers to vote for their neighbors' businesses and services has gotten stronger and brought more and more people into participating resulting in more businesses and individuals being recognized. Only the top two are listed in the Best of Souhegan supplement published

at the end of August. And that is a shame. There are many, many more companies, professional people, shops and restaurants who receive votes. They are winners, too. We wish everyone who received votes could be listed and recognized for what they are providing to form the fabric of our communities.

Community – that is another aspect of the awards that is so important. Like the scenes of village commons on my wall, voting for and supporting neighbors is a powerful thing these days. With all the commerce of the internet, taking time to stop and think and vote for the people you see and talk to for services and goods makes a strong statement. The tie that is formed person to person, customer to company reconnects us to one another and to the Souhegan Valley community. Service is another key. There is no checklist. The voters type or write in the business or individual from their own experiences. There is no “choose one of the above” to this “fill in the blanks” ballot. By conscience choice, a name is put down to receive the vote. We vote for honesty, reliability, solid, good practices. We vote for quality.

Thank you. Thank you to everyone who received a vote. Thank you to everyone who voted. You validate what I have come to believe about our Souhegan Valley. It is the best place to live and work. Thank you for making it so. Thank you for thinking and shopping and servicing “Local”.

Souhegan Valley



69 Route 101A • Amherst, NH 03031
603-673-4360 • fax 603-673-5018
chamber@souhegan.net
www.souhegan.net

Happenings is published monthly by
the Souhegan Valley Chamber
of Commerce

Subscriptions are complimentary to
members and \$15.00 annually to non-
members.

Editor: May Balsama
Graphic Design: SJ Balsama
Publishing Support : Chuck Taylor

Welcome New Members

Aflac
Leland Anderson
65 Leominster Road,
Lunenburg, MA 01462
781-223-0276
www.aflacforbusiness.com

Why Aflac? In times of financial uncertainty, lowering costs while maintaining the quality of your business is key. When it comes to finding a cost-efficient way to provide your employees with the benefits they need, Aflac can help.

By making Aflac insurance policies available along with your major medical insurance, you can give your employees the kind of benefits they'd expect from a bigger company, at no cost to your company. In fact, Aflac's tax-advantaged plans allow employees to use pre-tax dollars to pay for certain benefit costs. And when you lower the taxable incomes of all participating employees, you may also reduce your overall share of FICA and FUTA taxes.

So what is Aflac? Aflac is a supplemental insurance designed to help pay the out-of-pocket expenses that accrue due to an

illness or injury; expenses such as copayments, deductibles, mortgages, rent, bills; anything that medical insurance does not cover. Give Lee Anderson a call for more information about the Aflac advantages.

Sanford Temperature Control, Inc.
96 Old Wilton Rd., Unit #1, Milford
672-1643 www.sanfordtemp.com

Sanford Temperature Control, Inc. is a family run business that has been in operations since 1982. We offer quality service and equipment for all of your indoor comfort needs.

All of our service and installation technicians are professionally trained and fully insured. Your technician is not only trained to care for your equipment, he's trained to care for your home. You can take comfort in knowing our technician's are drug-tested and background checked first rate providers are all we'll allow into your home.

We service all propane, natural gas and oil Furnaces, Air Conditioners, Hot Water Heaters and Boilers. We do replacements, upgrades and add-ons such as Humidifiers,

Air Purifiers, etc. We offer service and installations on Rinnai tank-less water heaters for optimal energy efficiency. Our pricing is always upfront and never a surprise.

If you need your air ducts cleaned, we are the service company to call. Our Roto-brush system uses an advanced cleaning method that brushes and vacuums at the point of contact.

We offer a 100% guarantee. If you are not fully satisfied, let us know and we'll make it right or you don't pay.

We assure you, you will be very happy with the service you receive from us. For any customer service questions, please contact us at 603-673-1643 or visit our website at www.sanfordtemp.com. We will be happy to answer any of your questions.

Thank you for choosing Sanford Temperature Control, Inc. for your heating and cooling needs.

Three H's Prevail!

After Hours in August

Not the usual three H's for a sultry summer night at Salzburg Square. We are talking Hospitality, Hors d'Oeuvres Extraordinaire and Happy Faces!

Antiques at Mayfair's dealers and proprietor, Linda May, pulled out all the stops to give the Chamber members and friends an evening to remember. Lots of familiar faces were joined with new guests to make for lively conversation and some new opportunities.

Thank you to everyone at Antiques at Mayfair for your warm welcome and wonderful refreshments. And to Pennichuck Brewery for providing libations, Enchanted Lace, Amherst Nursery and Gardens, Whimsey Gift Shop, Just Naturals, The Golden Egg, Lisa's Sweets on the Oval, and for a fabulous raffle!

September After Hours

Nelson-Michaud Funeral Home
September 16
32 Maple Street, Wilton

Vacations are over, summer is coming to a close – Time for Chamber Members and guests to get down to business! You are invited to kick off the Fall (and the fourth quarter) with our September After Hours at one of Wilton's gracious old Georgian-influenced homes on Maple Street. Just up Maple Street behind the Town Hall Theatre at #32 is Nelson-Michaud Funeral Home. Carl Michaud is anxious to show off the newly renovated facility that has been expanded to over 3200 sq. ft. of comfortable, beautifully appointed rooms. The large porch is the perfect place to reconnect after a summer hiatus from networking. Mark your calendars for a special opportunity to visit one of our Wilton members for good food, good friendship, good links to future business.

Please RSVP to the Chamber office so we may plan on your joining us.
673-4360

Member Happenings – Planning Ahead!

A personal note from Dorothy's Country Baskets and Gifts

"I just wanted to let the members of SVCC know how much I enjoyed being a part of this dynamic organization, even though my stint was brief. It is so good to see business people supporting and encouraging each other, and especially in these economic times when there is so much uncertainty. I wish you all a prosperous future, increasing enrollment in SVCC, and steadfastness in your mission of uplifting each other.

Thanks again,
Dorothy Nazarian of Dorothy's Baskets

The Shoppes at 326 326 Nashua Street, Milford

The Shoppes At 326 are holding a "Yard Sale" on Sunday, September 20th. Stop by for our Outdoor Sale from 9-2 with sales thru out the Shoppes. Announcing! A new consignment shop called the Painted Bird Consignment Boutique located on the lower level. You can contact Julie to get more info on her boutique within 326 by calling 603-769-3083.

Wadleigh Memorial Library Nashua Street, Milford

For more information, please contact Michelle Sampson, Library Director msampson@wadleigh.lib.nh.us 603-673-2408

The Library will be closed Saturday, September 5 through Monday, September 7 for the Labor Day holiday.

Wednesday, September 9 - Veterans' Affairs: Documentary on homeless Veterans 7pm in the Keyes Room

Please join us in welcoming Matthew Bernard, decorated veteran and Milford resident.

Matthew will show and discuss his brief documentary film called Veterans' Affairs, which focuses on one homeless veteran with post-traumatic stress disorder. The documentary was filmed locally at Buckingham Place, at Harbor Homes in Nashua.

Matthew was recently featured on the front page of the Cabinet, for his efforts to provide employment for Veteran's through his own company, Brinestone located here

in Milford. This program is free and open to all.

Thursday, September 17
Get Organized! Downsizing Dilemmas... Solved!

7pm in the Keyes Room
You're at a time of your life when you are ready to simplify and downsize – whether you are moving or not. But you've been in your home for 25, 35 or 40 years, so where do you start? Maybe you went through downsizing with your parents and want to make it easier on your children, or do it all on your own. Come to the library to hear practical ideas for where to begin, how to decide what to keep and what to say goodbye to; where to give away what's no longer wanted or needed, and how to find the time to stay organized.

Our presenter is Sue West, a Certified Professional Organizer ® and Organizing Coach who has been helping people "rightsize" for their next chapter in life, for the past 5 years.

This program is free and open to all. Sign up online to guarantee a spot.

NiaNHandYoga. 76 Route 101A, #8 Amherst, NH 03031 603-562-7525

OPEN HOUSE, Saturday September 26 from 9 a.m. to noon. Experience exercise without the suffering and boredom! Come by and do Nia, have something good to eat, and register to win a free month of unlimited classes.

SEPTEMBER EVENTS

Past Life Regression, a pathway to understanding the joys and sorrows of yesterday that relate to now and the future. In looking at past life scenes we can see how our self has evolved, what talents are recurring as well as our life purpose and the challenges we are/will be facing in our soul's development. A belief in past lives is not necessary since whatever scenes unfold in our unconscious mind leads or describes our current thoughts, beliefs and feelings. Using past life regression, we can better understand and accept ourselves. Pam Sayre has worked in the area of Past Life Regression for over 18 years.

Sunday, September 13th from 6 - 8 p.m., \$25.

Potluck Supper & Networking

Karen Kallie and Peg Donahue of Living Energy, and Lisa Jones facilitate a monthly networking group for everyone who is interested in meeting like-minded others for sharing, support, learning, enjoyment and growth. During Karen's and Peg's years developing Living Energy and Lisa's time developing her work with the Breath, Yoga, and Nia, they have all had many people express the need to connect with others who were traveling the path of personal and spiritual growth. This potluck gathering is an informal and relaxing means for like-minded people to meet, mingle and share! Each month we offer new information, tools or techniques as appropriate and in response to any requests. The next gathering is Sept 14, 2009 6:30 to 8:30pm. Fee is free but donations are appreciated to defray space rental. Learn How to Meditate, The physical, medical, psychological and spiritual effects of meditation are phenomenal. If you are new to meditation or interested in learning how to meditate, this workshop is for you. In this class you will: Learn the health related benefits to adding meditation in your life.

Learn how meditation can help Attention Deficit Disorder, lower blood pressure and help with various other medical and emotional conditions.

Learn various techniques to meditate. This workshop will review several of the techniques that are widely used, so each student can then choose which one they will adapt into their lives. Spend time meditating and practicing techniques.

Presented by Diane Lynn Gelinas, M.S.W., Reiki Master, Certified Hypnotherapist. September 20th 9 a.m. - 12:30 p.m. Tuition is \$50. Register at: <http://reikienergymedicine.com/registration.htm>

The River Card Room 185 Elm Street, Milford, NH 03055 603-249-5548 www.riverpokerroom.com

BEST PLAYER IN NEW HAMPSHIRE
POKER TOURNAMENT

continued on Page 5

Member Happenings – Planning Ahead!

POINTS TOURNAMENT: Monday, October 5th at 6:30pm
PLAY ALL MONTH LONG IN SEPTEMBER TO EARN POINTS!

Have you been wondering how you stack up against other poker players in New England?.....well so have we!

Come to our “BEST POKER PLAYER IN NEW HAMPSHIRE” search at The River Card Room in Milford, NH to find out. Players will compete in paid tournaments all month long in September to accumulate points. You can accumulate points by making the final table in any paid multi-table tournament, or placing in the top 3 in any Sit & Go, single table tournament, or River tournament. Any player that has earned points may come out and participate in this exciting event. Players will start with 1(25) unit chip for every 25 points earned from September 1st thru September 30th tournament play. The River Card Room will fund the September Points Tournament prize pool in the amount of \$2500.00 with tournament entry fees of \$36,000 or greater in the month of September.

1st \$1000.00, 2nd \$500.00, 3rd \$300.00,
4th \$200.00, 5th \$125.00, 6th \$75.00,
7th \$50.00, 8th \$50.00, 9th \$50.00, 10th
-\$50.00

Beaver Brook Association 117 Ridge Road, Hollis

Call 603-465-7787 for information and registration

Hiking and Sculpture

Sunday Sept 13
1-3 pm

Andres Institute Parking Lot Route 13
Brookline NH
Free.

Hike up Big Bear Mountain in Brookline NH to view more than 50 thought-provoking original sculptures nestled along walking trails all over the mountain in this 140 acre sculpture park. An art docent will also accompany you to explain the work of these international sculptors. Meet at 1 pm in the parking lot at the Andres Institute Route 13, Brookline NH.

Everyone is then invited to join in the Opening of the International Sculpture

Symposium from 3-5 pm to meet the institute founders and welcome this year's artists to NH. Refreshments will be served. This is a unique opportunity.

Autumn Walks: Stories and Activities for Parents and Young Children

Take time out with your young children to explore fall. Each class will include a short story or poems to stir up curiosities, a fun craft, and a venture to the special places of Beaver Brook for first hand investigation. Geared for ages 2-5. Younger siblings are welcome to come along. Please bring raingear when necessary.

Instructor- Ellen Roos-Unger
Mondays September 14, 21, 28, Oct 5, 19, 28, Nov 2 Time -12:30-1:30 Tuesdays
September 15, 22, 29 Oct 6, 13, 20, 27
Nov 3 Session A: 9-10 am
Session B: 10:30-11:30

Fee: Friends of BBA: \$50 for 7 weeks or \$9 per week if slots available. (\$5 per class for siblings) or \$56/session and \$6 per participating siblings.

SpaScape Celebrates One Year Anniversary

SpaScape Relaxation Retreat and Sun Spa
71 Rte 101A, Windmere Place, Amherst
603-249-5807 www.spascape.net
spascape@spascape.net

SpaScape, a new and unique concept in relaxation will be celebrating their one year anniversary September 14th through September 19th. We invite you to stop by and join us for special events throughout the week as well as daily specials.

Guided tours, free demonstrations, and raffles will be on going throughout the week.

§ Buy 1 service get 1 FREE
§ 20% off spa parties booked that week

MOTIVES Make-up will be on display all week with a 20% off discount

FREE Women's Self Defense Class

September 16th 7pm to 8pm with Grand Master Bob Lamattina of Tokyo Joe's Studio Nashua (call for more information)

Last Chance

The Ultimate Relaxation Club -\$30 (will

increase to \$45)

The Year Round Brown Tan Club- \$10 (will increase to \$25)

Stay Tuned more to come..... We hope you will stop by to celebrate us turning ONE! And Thank You to all of our wonderful and dedicated customers for contributing to our success! Call 603-249-5807 or visit our website www.spascape.net for further information.

Andres Institute of Art 11th Annual Symposium Route 13, Brookline

11th Annual Bridges and Connections International Symposium from September 13 and go on until October 4th. The public is encouraged to visit during symposium time, but open all day every day from dawn to dusk, FREE of charge (donations welcome). Just park down below at the parking lot and walk up to the trail. If anyone needs handicap access, or to drive up the driveway, please call ahead. 603-773-8441 During the SYMPOSIUM, (Sept. 14- Oct. 4). visitors are welcome to DRIVE UP the driveway.

On Sunday, September 13, we are having our opening reception for the public to meet the artists participating in is year's symposium "Cornerstone". The time is 3:00 PM, Brookline Town Hall.

Triangle Credit Union 70 Years of Service! 138 Route 101 A, Amherst

The Amherst Branch will be celebrating 70 years of service to the communities and members on September 16th. Stop by for Cake and Refreshments and wish Ijaz Akhtar, Branch Manager, and all the great people at Triangle a very Happy Anniversary and many more to come!

First Colebrook Bank's Amy Wheeler Promoted to Branch Administration and Marketing

Amy E. Wheeler has been promoted to Vice President/Branch Administration and Marketing at First Colebrook Bank. "Since joining the bank four years ago," says President and CEO



Jim Tibbetts, "Amy has proven herself to be a very capable and responsible officer and has done an excellent job assembling and managing a great team at our Amherst office. She is also involved in civic and charitable activities and represents the bank very well in our communities." First Colebrook Bank is headquartered in Colebrook, New Hampshire, and operates branch locations in Concord, Amherst, and Portsmouth.

The bank's continued growth and the scheduled opening of a new, full-service Portsmouth branch in early September

necessitated Wheeler's newly created management position. "At all four branches," adds Tibbetts, "Amy will enhance the efficiency of day-to-day operations and be responsible for the implementation of marketing, advertising, and community involvement. She will also work to ensure consistency in branch training and operational procedures, and to keep all offices informed regarding the latest consumer and compliance regulations."

In June 2005, Wheeler came to First Colebrook Bank as Assistant Vice President/Branch Manager/ Business Development. Her background includes Granite Bank/Ocean National in Milford, New Hampshire, Key Bank in Bedford, New Hampshire, and Milford Cooperative Bank in Milford where she began her banking career. Wheeler has also been very active in New Hampshire business, community and charitable organizations.

A Souhegan Valley Chamber of Commerce board member since 2006, Wheeler is the chamber's 2010-2012 Chair Elect and currently chairs its Ambassador Committee. She has also done committee work for the Greater Nashua Chamber of Commerce. Wheeler is currently serving her second term on the Nashua Pastoral Care Center Board of Directors. She is a member of IUGO, Nashua's network for young professionals, and has been accepted for the Leadership Greater Nashua program. Earlier this year, Wheeler participated in a Rotary International Group Study Exchange to the Philippines.

Wheeler holds a Bachelor of Science degree in Business Administration from the University of New Hampshire's Whittemore School of Business & Economics. Wheeler also studied International Business at Maastricht University Center for European Studies in the Netherlands.

Christiansen Promoted to Branch Manager at First Colebrook Bank

Shelly Christiansen has been promoted to Branch Manager at the Amherst, New Hampshire, office of First Colebrook Bank. "Shelly has been with the Amherst branch for five years," says



Executive Vice President/Chief Operating Officer Loyd Dollins. "She knows the market well and has a great rapport with customers. As Assistant Branch Manager since 2006, she has done a terrific job with day-to-day branch functions."

Before moving to First Colebrook Bank, Christiansen had been a Customer Service Representative with the former Granite Bank (now Ocean Bank) in Milford, New

Hampshire, and prior to that at Bay Bank in Burlington, Massachusetts. She began her banking career at several banks and credit unions in Denver and Golden, Colorado. A State of New Hampshire Notary Public, Christiansen has attended banking classes in both individual retirement accounts and consumer loans.

Founded in Colebrook, New Hampshire, First Colebrook Bank has been serving the banking needs of individuals and small business in New Hampshire and Vermont since 1889. First Colebrook Bank, a New Hampshire-owned, community bank, operates offices in Colebrook, Concord, Amherst and Portsmouth, New Hampshire.

First Colebrook Bank is a member of the FDIC and an Equal Housing Lender.

Save the Date!

Alpine Grove Upcoming Events Harvest Hootenanny 2009

Live Show Featuring:

The Ballou Brothers Band
The Slakas
The Pop Farmers
The Harvest Hoot Allstars

Saturday, October 3rd 2009

7-12 pm
\$10 Cover

Alpine Grove Function Facilities

Watch for details
www.alpinegrove.com
Route 111-A Hollis, NH
603-882-9051

Social Media is NOT a Fad

It's no mistake that social media tools like Twitter, YouTube and Facebook have propelled themselves to the top of everyone's marketing discussions. If you aren't learning and talking about this revolution and finding ways to implement social media into your business' daily workflow, then you are simply being left behind and setting yourself up for failure. People are online talking about your business right now. Are you taking part in their conversation? Consider this:

- 78% of people trust a peer's recommendation and Twitter followers, Facebook friends and blog subscribers are all peers
- 80% of all Twitter posts (tweets) are made from mobile devices.
- 34% of an estimated 200 million bloggers post opinions about products and brands
- 54% of them tweet or blog everyday

That means before they even leave your store or office, they can post about their experience with your company. Do you know what they are saying? As a business owner, what are you doing to leverage positive experiences and if you are a restaurant, what are you doing to promote reviews on sites like Yelp.com?

Southern NH Expo Under the Dome!

continued from Page 1

to give everyone this opportunity. The SV Chamber recognizes the importance of including everyone in the Expo. The entire region may be large geographically, but the population is shared both for business to business and consumer purchases. "We believe the best stimulus package is one that invests in our local companies. Everyone is feeling the effects of the economy. One response in an effective way is to provide a showcase that brings businesses, services, professionals together with their neighbors and people who want to shop locally for their purchases," explains Richard Mori, Mori Books and Co-Chairman of the Southern NH Expo with Mike Brisebois, Hitchiner Manufacturing. "Whatever is spent by our citizens, we ask it be spent with our neighbors. That will mean more than you

Still not convinced? Consider that by this January, Generation Y will outnumber Baby Boomers and 96% of them are currently part of a social network. Not looking to appeal to the under 25's? According to SearchEngineWatch.com, "the fastest growing segment on Facebook is 55-65 year old females" and in June alone the Nielson Company reported the 55+ demographic accounted for 20% of Twitter's growth and 25-54 year olds joining Twitter accounted for 64% of the total 44.5 million unique visitors to the site.

Alexa, a web information company, puts Facebook and YouTube at the third and fourth most visited sites on the internet with only Yahoo and Google ahead of them. In fact, half of the top 15 most visited sites in the world are social networking/media sites.

Do you still think social media is a fad?

About.

Lenwood Brown III is New Hampshire native and owns FixMedia which is an agency specializing in social media, graphic design and marketing consulting. You can find him at fixmedia.tv and follow him on Twitter @notoriouslb3.

would imagine in helping keep our area strong."

The Expo committee has grown with the venue and the scope of the event. Six sub-committees of volunteers are working to make this The Event for the region. The Special Features committee has scheduled an impressive group of demonstrations and performances that will attract a large, diverse crowd. Improvements, extra large booths, no increase in cost. "We want everyone to participate and take advantage of this chance to market themselves and their businesses. It is a chance to advertise at a prime time in the year for many companies for the coming holiday season. Vendors are encouraged to sell their products from their booths," from Mike Brisebois. Don't be left out – Call the SV Chamber office for more information and reservations.

Antiques Expo, October 23 & 24

continued from Page 1

Dome in Milford, New Hampshire. The largest indoor sports facility in the state, the Hampshire Dome offers a climate controlled venue where it is always sunny and dry for shopping the 100 most sought after dealers who will be exhibiting. Parking is plentiful, convenient and free.

"I know the dealers I have spoken with are very excited to be joining in. There are no other shows that time of year. This offers dealers and collectors a great opportunity to kick off the fall season when so many are getting a jump start on adding something special to their homes for the holidays or for special gifts," says Linda May, proprietor of Antiques at Mayfair, Amherst.

The exhibits will feature the finest in authentic country, Americana and formal antiques in furniture, primitives, prints, folk art and related accessories, glass and ceramics. A select number of old and rare book and ephemera dealers will be at the SNH Expo with a concentration on NH collections. "The interest in fine antiques and memorabilia is growing. The warmth and familiarity appeals to so many. The chance to hold and own a piece of the past connects people to the area in a very special way. A tangible way of experiencing the past. We are very excited to be hosting the Southern New Hampshire Antique Expo", explains Richard Mori, Mori Books and a member of the SVCC Board of Directors.

The Souhegan Valley Chamber of Commerce is hosting this event that opens Friday, October 23 at 6:00 PM with a Reception and Preview Sale. The \$10. admission price will include Saturday, October 24 which will be open from 10:00 to 4:00 PM. Saturday tickets can be purchased separately for \$5. Additional information can be found on the chamber's website, www.souhegan.net or by calling the office at 603-673-4360.

10 Things You Should Do to Know the Real New Hampshire

excerpts from his list of "100 Things" by Steve Taylor, Retired Commissioner of Agriculture NH

1. Visit a real working dairy farm; stand in the pit of the milking parlor and watch what happens.

Some to try:

Stonewall Farm, Chesterfield NH, Connelly Family Farm, Temple NH; Fitch's Farm, Milford, NH; Graymist Farm, Groveton; Tullando, Orford; Stuarts, Stratham; Pine Lane, Contoocook.

2. Get out of your car and slowly walk through any New Hampshire covered bridge. Climb down the stream bank and look up under, too.
3. Watch the sap boil at a sugarhouse and taste syrup hot from the pan.

There's a lot of socializing when they're boiling late into the night.

4. Ride the Thomas Loughton to the Isles of Shoals.
5. View the landscape paintings of Durham artist John Hatch.
6. Quietly paddle a nearby pond and listen for loons, beavers, heron and ducks.
7. Pick your own berries or apples at a nearby farm.
8. Climb to a fire tower and talk with the observer. Hurry, they may not exist much longer. The closest firetower is on Federal Hill Road, Milford. There is one to climb on Pack Monadnock in Temple too.

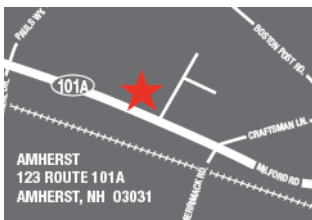


9. Observe a purple finch, the New Hampshire state bird.
10. Climb Monadnock and see what makes it the Most Climbed Mountain in the western hemisphere.

From Beaver Brook Association newsletter



Sports Authority is proud to be part of the Amherst Community.



**Store Location:
123 Route 101A
Amherst, NH**

Across from Lowes Plaza



Mention this ad, and receive your 1st month of service FREE

- Focused on Small Businesses
- Local, Responsive, Accessible
- Guaranteed 20% Savings Over Large Payroll Firms
- No Start-Up Costs
- Say "Goodbye" to Payroll Headaches

(603) 821-5000 ♦ Fax: (603) 821-3832

visit us online at: www.infinitypayroll.com

491 Amherst Street, Suite 25 ♦ Nashua, NH 03063

Congratulations from Rick Boyd, Board Chairman

Best of Souhegan Readers Choice Awards Announced

Congratulations to the recipients of the 2009 Best of Souhegan Readers' Choice Awards. Voting online and by mail, the readers of the Milford Cabinet, Merrimack, Hollis- Brookline and Bedford Journals have taken the time to honor you with casting their ballots for you and your businesses. This was not done by multiple choice. They wrote in your name because they appreciate the excellent service and products you provide. As Chairman of the Board of the Souhegan Valley Chamber of Commerce, I am proud of the business community of our area towns. There are many who were recognized by their customers in addition to those listed here. It is the climate of good service, honest business people and outstanding professionals that has sustained our communities these last several months during what has become a very difficult economic time. All of you represent the best that the Souhegan Valley has to offer. By your example, we hope to shed some light what it takes to get our economy back on its feet again.

Congratulations to our Chamber Members!

Category	Business Name
Antique/Consignment	Antiques at Mayfair
Appliance Store	Brennan & MacKay Appliance
Appliance Store	Lowe's
Books/Specialty	Toadstool Bookshop
Books/Specialty	Mori Books
Crafts/Hobbies	New Hampshire Scrapbook Cabin
Florist	Woodman's Florist
Garden Store	Agway of Milford
Gift Shop	JM Princewell
Hardware Store	Lowe's
Home Décor & Furnishings	Winchendon Furniture
Music/Video	Wal-Mart
Pet Supplies	Food for Pets
Sporting Goods Store	Sports Authority
Bakery	Frederick's Pastries
Dinner Restaurant	Hampshire Hills
Lunch Restaurant	Elisha's Restaurant
Accountant	J. Kenneth Fordham, CPA

Animal Hospital	Ponemah Veterinary Hospital
Auto Sales	Medlyn Motors
Auto Services/Repair	Medlyn Motors
Bank	First Colebrook Bank
Bank	TD BankNorth
Building/Remodeling	Kitchen Tuneup
Building/Remodeling	Allen Remodeling
Car Dealership	Contemporary Chrysler
Chiropractor	Spinal Corrective Center
Chiropractor	The Back Stop
Computer Support	Microtime Computer
Credit Union	Triangle Credit Union
Credit Union	Granite State Credit Union
Dance Studio	Kathy Blake Dance Studio
Day Spa	Hampshire Hills
Dentist	Kayser, Clark & Leighton
Dentist	Family Dental of Milford
Financial Planner	Marc Chareth, Edward Jones
Financial Planner	Brian McGuigan, Edward Jones
Fitness Facility	Hampshire Hills
Golf Course	Amherst Country Club
Golf Course	Ponemah Green Family
Golf Center	

Gymnastics School	Gymnastics Village
Hair Salon	Hampshire Hills
Heating/Air Services	Absolute Mechanical Systems
Heating/Air Services	Sanford Temperature Control
Holistic Health	Earthward Natural Foods
Holistic Health	Spinal Corrective Center
Insurance Agency	Eaton & Berube
Insurance Agency	Beard & Boyd
Internet Services	Robin Warren
Massage	Hampshire Hills
Massage	Caring Hands Massage
Therapy	
Optometrist	Dr. Ronald Coutu, Nashua Eye Associates
Pet Groomer	Doggie Bag & Day Spa
Real Estate Agency	Re/Max Properties (Virtual Homes Real Estate)
Real Estate Agent	Joanne Laychak - Coldwell Banker Residential Brokerage
Septic	Souhegan Septic
Taxi or Limo Service	LA Limo
Yoga	Amherst Yoga
Yoga	Hampshire Hills

WE UNDERSTAND COMMITMENT.

For decades, Edward Jones has been committed to providing financial solutions and personalized service to individual investors.

You can rely on us for:

■ Convenience

Locations in the community and face-to-face meetings at your convenience

■ A Quality-focused Investment Philosophy

A long-term approach that focuses on quality investments and diversification

■ Highly Personal Service

Investment guidance tailored to your individual needs

Call or visit today.

Brian S McGuigan
46 Route 101A
Amherst, NH 03031
603-672-5520

Marc D Chareth
1 Elm Street
Milford, NH 03055
603-673-3957

www.edwardjones.com Member SIPC

Edward Jones
MAKING SENSE OF INVESTING

Your ONE-STOP Packing, Shipping, Copy, FAX Center

POSTAL CENTER USA

BUY STAMPS HERE

UNITED STATES POSTAL SERVICE™

Custom Packing & Shipping • Postage Stamps
Notary • Business Cards • FAX • Copies
Keys • Office Supplies • Mailbox Rentals
Greeting Cards • And Much More!

FedEx Express • Ground Authorized ShipCenter®
Authorized Shipping Outlet **ups**

DHL EXPRESS **MasterCard** **Discover** **Amex** **VISA**

NEIGHBORHOOD POSTAL CENTERS MEMBER

Lorden Plaza (Near Movie Scene) • 614 Nashua Street, Milford
672-8816 • FAX 673-8829 • www.postalcenterusa.com

Chamber Dedicated Seat Referral Group Launched

Hosts Open Informational Meeting September 15

In late June the Chamber launched a dedicated seat referral group. This is a team of Chamber members dedicated to growing their businesses and the businesses of the team through the power of referrals. This rapidly expanding group provides a local, cost-effective referral group to leverage your existing chamber membership.

The group offers each profession or business area a seat at the referral table. The fee is \$75, and open to Chamber members only. Once the seat of a profession is taken, another candidate's application will not be approved. For example, only one seat is available for a residential realtor and a second residential realtor will not be added. If the residential realtor seat opens, applications on the waiting list will be given first priority.

The group is currently generating referrals and revenue for the members and the increase in members will drive a proportionate increase in referrals. The goal of the group is to have 20-40 members by the end of the year.

During the launching of the group, applications for open seats will be taken on a first come, first serve basis. The group

welcomes all prospective members the opportunity to attend and participate in two meetings, prior to joining the group to ensure it is a fit for growing your business. Join us September 15 for a special Open Meeting for more information.

Member expectations

Open to giving and receiving referrals.

Meet all members in individual informational meetings to understand their businesses.

Attend weekly meetings, Tuesday, 7-8 a.m. at Chamber office. Substitutes are allowed, as well as 3 absences in a 3 month time-frame.

Participate weekly by providing your 60-second commercial to the group. In addition you will be given an opportunity for a 10-minute presentation to the group in the first few months to further explain your businesses.

Collaborate with the group as needed.

The Group is currently expanding power teams in the following business areas:

- Home Services, Contractors & Builders
- Business Services
- Health & Wellness
- Event Planning & Events

Key seats the team is looking to fill immediately include:

- Commercial Banker/Lender
- Home Care for Seniors
- Estate Attorney/Medicare Attorney
- General Business Attorney
- Accountant/CPA
- Payroll company
- Commercial Printer
- Event/Wedding Planner
- Florist
- Business Marketing
- Promotional Products
- Computer/Technology Services
- Chiropractor
- Physical Therapist
- Massage Therapist
- Commercial Realtor (only Commercial)
- Builders
- Home Remodeling/Contractor
- Electrician
- Landscaper
- HVAC
- Plumber

For additional information please contact:
Barbara King, AspenCross Financial
603-438-9619 or
barbarakingnh@gmail.com

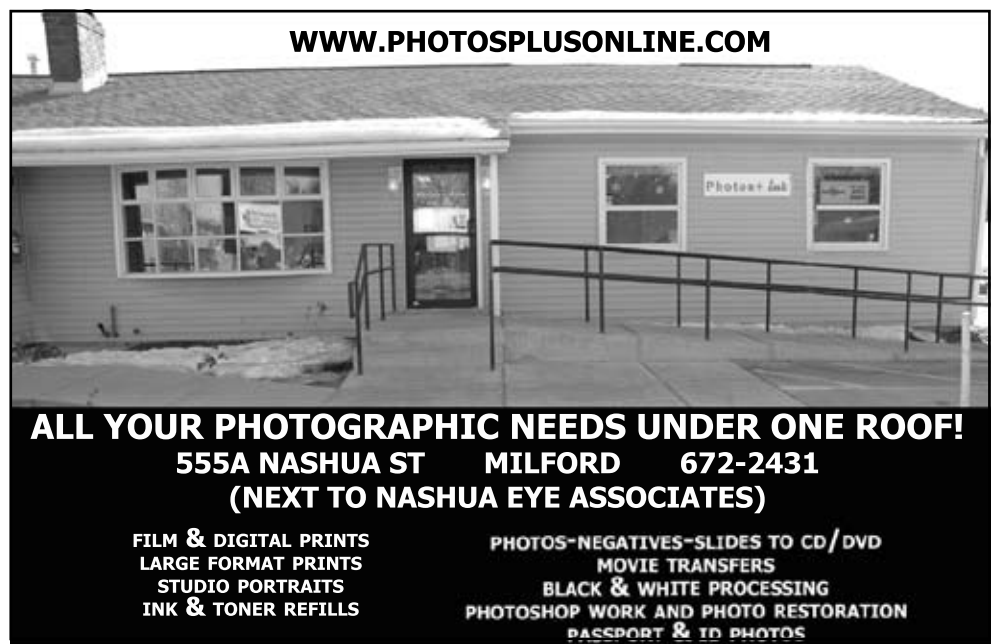
Walter Schnecker, Catching – 1 – Moment
Professional Photography
603-673-8200 or wschnecker@clmpp.com

Petrocelli

continued from Page 1

Petrocelli played for the Boston Red Sox for 13 seasons as a shortstop and third baseman in two World Series, the 1967 "Impossible Dream" ball club against the St. Louis Cardinals and in 1975 vs. the Cincinnati Reds. He was voted into the Red Sox Hall of Fame in 1997. Petrocelli was the first American league shortstop to hit 40 home runs in a season. He ended his career with 210 home runs and 778 RBI. Continuing with his first love, he managed and coached in the White Sox and Red Sox organizations.

Rico Petrocelli lives in Nashua and is the president of Petrocelli Marketing Group. Working with his son, Mike, the company specializes in creating brand awareness, motivating sales force, and building customer relationships that help develop and deliver programs that succeed.



WWW.PHOTOSPLUSONLINE.COM

ALL YOUR PHOTOGRAPHIC NEEDS UNDER ONE ROOF!
555A NASHUA ST MILFORD 672-2431
(NEXT TO NASHUA EYE ASSOCIATES)

FILM & DIGITAL PRINTS
LARGE FORMAT PRINTS
STUDIO PORTRAITS
INK & TONER REFILLS

PHOTOS-NEGATIVES-SLIDES TO CD/DVD
MOVIE TRANSFERS
BLACK & WHITE PROCESSING
PHOTOSHOP WORK AND PHOTO RESTORATION
PASSPORT & ID PHOTOS

***BRING THIS COUPON AND RECEIVE 10% OFF YOUR ORDER**

Member Directory

Every month all of our Chamber members will be listed. Bold print will be used to distinguish Premiere and Premiere Plus Members. Additional information may be included in the listing for a nominal fee. A listing that includes logo, name, address, telephone and website is \$48 annually. Please contact the Chamber at 673-4360 for more information.

-A-

Accountants

Abacus Tax & Accounting Services ph: 557-7754
Brayman, Houle, Keating & Albright PLLC
ph: 595-8000
Business Clinic, Inc., The ph: 672-1234
Christopher Rogers, CPA ph: 673-0336
Dionne & Strout, PA ph: 598-3693
J. Kenneth Fordham CPA ph: 672-1830

Advertising Promotional Specialties

American T Shirt Co. of NH ph: 672-4481
Town Planner Community Calendar ph: 791-4748

Antique Cars

Amherst NH Outdoor Antique Market, Inc.
ph: 673-2093

Air Conditioning/Heating

Absolute Mechanical ph: 249-9800

Antiques

Antiques at Mayfair ph: 546-0194
The Shoppes at 326 ph: 672-3900
White Home Collections ph: 654-7363

Apartments

Woodland Heights Apartments ph: 673-1155
Brookstone Manor ph: 673-0126

Apparel

Barbour, Inc. ph: 673-1313

Appliance Sales & Service

Brennan & MacKay Appliances ph: 673-1177

Appraisal Services

F & M Appraisal Group, Inc. ph: 673-9666

Art Galleries/Instruction

Andres Institute of Art ph: 673-7441
Expressions Gallery, Inc. ph: 673-2136

Automobile Sales & Service

Accent Auto Group ph: 673-3333
Contemporary Chrysler Dodge, Inc. ph: 673-5511
Medlyn Motor, Inc. ph: 673-1667
Saturn of Nashua ph: 800-422-4825
Subaru of Milford ph: 673-0510

-B-


Bakeries



Frederick's Pastries

109 Route 101A, Amherst, NH 03031
ph: 882-7725
25 South River Road, Bedford, NH 03110
ph: 647-CAKE
www.pastry.net
EJ Bakery ph: 654-9393
Maple Lane Farm ph: 654-5362
Stormy Moon Bakery ph: 654-9582

Banks & Banking Associations

Centrix Bank & Trust - Milford ph: 672-4200
Citizens Bank - Amherst ph: 673-0177
Citizens Bank - Milford ph: 673-3480
First Colebrook Bank
 69 Route 101A
Amherst, NH 03031
ph: 673-1440

fax 673-1290

www.firstcolebrookbank.com

Lake Sunapee Bank ph: 673-2350

The Nashua Bank ph: 882-2700

Ocean Bank - Jones Road ph: 673-4700

Ocean Bank - Lorden Plaza ph: 672-5055

Sovereign Bank - Hollis ph: 465-7080

Sovereign Bank - Wilton ph: 654-2621

TD Banknorth ph: 249-4021

Banquet Catering

Alpine Grove Banquet Facility ph: 882-9051

Bed & Breakfasts

Stepping Stones Bed & Breakfast ph: 654-9048
Zahn's Alpine Guest House ph: 673-2334

Book Stores

Mori Books ph: 732-0258
Toadstool Bookshop ph: 673-1734

Boutiques & Specialty Shops

Amanda Thomas Women's Boutique ph: 595-9447
Dorothy's Country Baskets & Gifts ph: 889-7726
J.M. Princewell ph: 673-0611
Just Naturals ph: 672-6900
Salzburg Square ph: 732-6507
The Cozy Tea Cart ph: 249-9111
Whimsey Square Gift Shoppe ph: 673-3111

Business and Organizing Services

Space 4U, LLC ph: 765-9267

-C-

Candy

Lisa's Sweets ph: 672-1022

Chiropractors

Amherst Family Chiropractic Wellness Center
ph: 673-0010
Backstop Chiropractic Health Ctr, Inc. The ph: 673-1511
Elm Chiropractic Center ph: 673-6133
Spinal Corrective Center ph: 673-5600

Civic Organizations

Amherst Lions Club ph: 673-2834
American Red Cross ph: 625-1951
DO-IT Milford Main Street Program ph: 672-4567
Little Hands to Hold Inc. ph: 547-2114
Make-A-Wish Foundation of NH ph: 623-9474
Milford Rotary Club ph: 673-4778
Opportunity Networks ph: 883-4402
SCORE ph: 666-7561
SHARE ph: 673-9898
Souhegan Valley Interfaith Council ph: 673-4781
United Way of Greater Nashua ph: 882-4011
Veteran's of Foreign Wars, Harley Sanford
Post #4368 ph: 673-9817

Wilton Main Street Association ph: 654-3020

Cleaning/Restoration

Certrex, LLC ph: 437-4594
Wendi's Cleaning Services, Inc. ph: 673-4266

Coin Dealers/Collectibles

Rare Coins of New Hampshire, Inc. ph: 673-9311

Computer Services

Brinestone ph: 673-6696
Computer Alliance ph: 881-8411
CEJ Computer Business ph: 424-3117
Computer Troubleshooters ph: 262-1557
GatherWorks ph: 801-3552
Microtime ph: 672-7076
Dharma Systems ph: 732-4001

Conservation Education

Beaver Brook Association ph: 465-7787

Construction/Contractors

Gavin Remodeling ph: 672-3200
Guardian National ph: 249-5365
Hammersmith Post & Beam ph: 654-3210
Portrait Homes Inc. ph: 672-8228

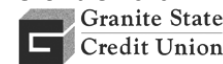
Country Clubs & Golf

Amherst Country Club ph: 673-6351

Credit Card Processing

East Commerce Solutions, Inc. ph: 800-527-5395

Credit Unions



Granite State Credit Union ph: 249-9035
www.gscu.org
St. Mary's Bank phone ph: 249-7301
Triangle Credit Union ph: 577-9137

-D-

Dance Instruction

Kathy Blake Studios ph: 673-3978

Dental Practices

Amerident Dental ph: 672-6546
Amherst Pediatric Dental Associates ph: 673-1000
Family Dental Care of Milford P.A.



154 Elm Street / PO Box 135
Milford, NH
ph: 673-3332
www.fdcmilford.com

Kayser, Clark & Leighton PLLC ph: 673-7950
Kenneth G. Edwards, D.D.S. Family Dental Care
ph: 673-0782

Department Stores

Wal-Mart ph: 672-3421

-E-

Elder Housing

Bentley Commons ph: 644-2200
Parkhurst Place ph: 249-1600
The Isle at Ledgewood ph: 672-5037
The Scott-Farrar Home ph: 924-3691

Electricians

KB Electric, LLC ph: 801-3563

Employment Staffing Services

Accurate Staffing, LLC ph: 673-1083
Adecco, The Employment People ph: 598-0117
Personnel Interface Staffing Services, Inc., The
ph: 732-0206

Event Planners

Be Dazzled Events ph: 577-1647

-F-

Family Services

Big Brothers Big Sisters of Greater Nashua
ph: 883-4851

Bridges-Domestic & Sexual Violence Support
ph: 672-9833

Granite State Child and Family Counseling, LLC
ph: 672-1881

Milford Regional Counseling Services ph: 673-2508
Nashua Pastoral Care Center, Inc. ph: 886-2866

Financial Services

Ameriprise Financial Services ph: 668-1273

5 Bedford Farms, 3rd Floor
Bedford, 03110 www.ameriprise.com

AspenCross Financial Group ph: 232-8262

Boutin Financial Group ph: 878-0584

Commonwealth Financial Group ph: 769-7776

Edward Jones Investments - Amherst ph: 672-5520

Edward Jones Investments - Merrimack ph: 429-3833

Edward Jones Investments - Milford ph: 673-3957

Institute of Higher Learning ph: 800-504-2340

Merrill Lynch ph: 628-3244

Money Concepts, CTS Financial Service, Inc.
ph: 880-6671

Fitness Facilities

Amherst Yoga ph: 673-7661

Hampshire Hills Sports & Fitness Club ph: 673-7123

Nia NH & Yoga, LLC ph: 562-7525

Florists

Amaryllis ph: 889-7750

Everything Nice by Kerri ph: 880-3393

Woodman Florist ph: 673-3545

Fuel

Ciardelli Fuel Co., Inc. ph: 673-1336

Funeral Homes

Nelson-Michaud Funeral Home ph. 654-6524

Furniture Retail

Winchendon Furniture Co., Inc. ph: 880-6393

-G-

Garden Centers & Nurseries

Milford Agway ph: 673-1669

Government

Town of Amherst ph: 673-6041

Town of Milford ph: 673-3514

Graphic Design Services

FixMedia ph: 721-9283

Trademark Graphic Design and Marketing

PO Box 6083

Manchester, NH 03108

Tel 603-880-1410 - Fax 603-669-4936

www.trademarkgraphicdesign.com

Innovative marketing and packaging design.

William Pike Design ph: 672-5176

Gymnastics Instruction

Gymnastics Village, Inc. ph: 889-8092

-H-

Health/Wellness Services

Granite State Vitamins ph: 801-8452

Home Health Care/Nursing Homes

Living at Home SeniorCare ph: 546-6060

St Joseph Home & Hospice Care ph: 673-3460

Home Decorating/Staging

WeStage, LLC ph: 533-3426

Home Improvement

Artistic Tile ph: 886-1920

Dial I Maintenance Service ph: 529-0711

Green Gallery ph: 654-6930

Home Theater & Beyond ph: 424-1968

Lowe's Home Improvement ph: 521-9241

Markal Angelo ph: 566-9013

Total Deck Care ph: 303-5292

Hospitals

Foundation Medical Partners ph: 577-2770

-I-

Insurance

Allstate Ins. Co. Jim Parolin & Associates ph: 429-8800

AspenCross ph: 232-8262 x2

Beard & Boyd Insurance Agency LLC ph: 673-7228

Constable Agency-Nationwide, Inc. ph: 672-2243

Davis & Towle Insurance Group ph: 672-5255

Eaton & Berube Insurance Agency, Inc. ph: 673-0500

Holt Agency, The ph: 673-1201

Proctor Insurance Agency, The ph: 654-2081

Tom Peters State Farm Insurance Agency
ph: 889-4333

-J-

Jewelry

AmericanAccessory by Alina

www.americanaccessory.etsy.com

Lia Sophia ph: 673-5737

-K-

Kitchen & Bath Design

Kitchen Tune-Up® ph: 673-6499

-L-

Landscaping Contractors

Kearney's Landscaping, LLC ph: 878-2864

Let the Other Guy Do It Landscaping ph: 672-5180

Law Offices

David G. Sturm, Counselor at Law, PLLC ph: 673-4543

Griffin & Owen P.C. ph: 673-5200

Maiona Law, PLLC ph: 769-3924

Wiggin & Nourie ph: 669-2211

Wing & Weintraub, P.C. ph: 673-7256

Leather Goods

Hayward's Trading Post ph: 673-1321

Libraries

Wadleigh Memorial Library ph: 673-2408

Lighting, Lamps, Fixtures & Supplies

Souhegan Lighting Products, LLC ph: 889-8962

Limousine Service

L.A. Limousine ph: 654-3899

-M-

Management Consultation & Training

Calm Water, LLC ph: 566-7847

Sapphire Consulting, LLC ph: 889-1099

Manufacturing

Alene Candles, Inc. ph: 673-5050

Cirtronics Corporation ph: 249-9190

Hitchiner Manufacturing Company, Inc. ph: 673-1100

MTH ph: 886-0011

Pike Industries ph: 654-9400

Saint-Gobain Crystals ph: 673-5831

Williams & Hussey Machine Co., Inc. ph: 654-6828

Marketing Consultants

MarketingFirst

44 Catacunemaug Road, Shirley, MA 01464
978-764-8711

Markets

Earthward Natural Foods & Co-op ph: 673-4322

Massage Therapy

Associated Muscular Therapy ph: 582-5409

Blue Sky Massage Therapy ph: 465-2777

Caring Hands Massage Therapy, LLC ph. 508-1562

Sarah Whitcomb Massage ph: 672-4124

Mortgage Services

Cousins Home Lending, Inc. ph: 433-2223

NE Best Rate Mortgage ph: 930-5706

Moving & Storage

Carrier Self Storage ph: 673-9538

Granite Clover Self Storage, LLC ph: 883-2188

Music/Performing Arts

Andy's Summer Playhouse ph: 654-2613

Milford Area Players ph: 801-4473

Monadnock Chorus ph: 654-5566

-N-

Newspapers

Cabinet Press, The ph: 673-3100

Telegraph, The ph: 594-6539

-O-

Office Equipment

New England Copy Specialists

ph: 800-321-6327 x7745

Konica Minolta Business Solutions

ph: 898-4114

Office Supplies

Staples Office Superstore ph: 578-4897

Optometrists

Joseph J. Raczek O.D. ph: 673-7428

Nashua Eye Associates, Inc. ph: 672-8800

Orthodontics

Amherst Orthodontics ph: 672-0844

Edward L. Klopfer D.D.S., PA Orthodontist
ph: 673-2406

-P-

Party and Event Rentals

Special Events of New England ph. 624-8389

Payroll Services

Infinity Payroll ph: 821-5000

Personal Chef


The Everyday Epicure ph: 672-0708

Personal Coaching

Summit Coaching ph: 785-0522

Pets

Food for Pets / Souhegan Pet Supply

 Cobblestone Corner, 76 Route 101A
Amherst, New Hampshire 03031

ph: 673-7387

email: food_for_pets@comcast.net

Granite State Dog Center ph: 672-3647

The Doggie Bag and Day Spaw ph: 249-1149

Photography

JMarie ph: 249-5805

Photos Plus ph: 672-2431

Catching I Moment Professional Photography
ph: 673-8200

Loving Impressions ph: 769-0513

Physical Therapy

Amherst Physical Therapy ph: 672-5125
Hampshire Hills Clinic for Physical Therapy
ph: 672-4478

Physicians & Surgeons

Elliott Family Medicine at Amherst ph: 249-3000
Dartmouth - Hitchcock Milford ph: 673-2515
Greenhouse Naturopathic Medicine ph: 465-2895
Robert D'Agostino MD Family Practice
ph: 672-2003

Postal / Package Services

Postal Center USA ph: 672-8816

Printing/Publishing

Amherst Label, Inc. ph: 673-7849
Copy Shop, Inc., The ph: 882-9111
Hansen Printing & Design Services, LLC ph: 672-7599
Gallagher Printing Services, ph: 672-4540
Labels For Less ph: 654-8379
Minuteman Yellow Pages ph: 866-922-3990
SendOutCards Distributor ph: 878-2411
Town Planner Community Calendar ph: 791-4748
The Armarium Press/Canterbury Talls Books
ph: 878-3811

Propane

EnergyNorth Propane ph: 654-6070
Suburban Propane ph: 673-2903

Property Management

Stewart Property Management ph: 641-2163

Psychotherapy

Woodard Hypnosis and Research, Inc.
ph: 673-2582

Public Relations

Civic Media Corporation ph: 673-9545

-R-

Real Estate

Amherst Rose Realty ph: 673-9141
Coldwell Banker ph: 673-4000
Grubb & Ellis/Coldstream Real Estate Advisors, Inc.
ph: 623-0100 x 207
Joan P. Lemire Real Estate ph: 654-6118
Kokko Realty, Inc. ph: 673-7000
Leonard, Lee & Company ph: 672-5100
Prudential/Verani Realty, Inc. - Londondery 434-2377
RE/MAX Country Properties - Amherst 673-9747
Roedel Partners, LLC ph: 654-2040
Sunset Settlement Company, LLC ph: 598-4030
Transitions Realty, LLC 673-0833

Recreation

The River Card Room ph: 249-5548

Referral Services

LeTip of Nashua ph: 498-6462

Restaurants

Elisha's Restaurant ph: 249-9452
Longhorn Steakhouse ph: 579-6975

-S-

Salons & Spas

Ageless Salon & Medical Day Spa ph: 883-3550
Emerald Hill Med Spa ph: 672-3172
SpaScape, LLC ph: 249-5807

Schools


High Mowing School ph: 654-9408
Little Einsteins Preschool Learning Center, LLC
ph: 673-3022

Mascenic Regional High School ph: 878-1113
Pine Hill Waldorf School ph: 654-6003
Regional Services & Education Center, Inc. 673-6656
SAU #39-Amherst/MontVernon/Souhegan 673-2690
SAU #41 Hollis/Brookline School District 465-2269
SAU #40-Milford School District ph: 673-2202
Southern New Hampshire University ph: 881-8393
Wilton-Lyndeborough Coop Jr. Sr. ph: 654-6123

Scrapbooking

NH Scrapbook Cabin ph: 769-3333

Sealcoating/Snowplowing

Shattuck Sealcoating & Paving, LLC
 P.O. Box 486
Milford, New Hampshire 03055
ph: 654-5695 • fax 673-2122
email: shattucksealcoatingllc@verizon.net
BLACK DAWG Sealcoat ph: 594-3294

Septic Services

Souhegan Septic Tank Service, LLC ph: 673-4711

Sign Manufacturing

Classic Signs ph: 883-0384
Poiant Signs, Inc. ph: 673-4233

Stoves – Wood, Pellet, Gas

Stove Keepers ph: 672-1280

Sporting Goods

Golf USA ph: 598-8721
Sports Authority ph: 594-3041

Supermarkets

Shaw's Supermarkets, Inc. ph: 672-1280

Surveyors & Engineering

Meridian Land Services, Inc. ph: 673-1441

-T-

Take-Out Foods

Moulton's Market ph: 673-2404

Telecommunications/Communication

DSCI Corp. 781-862-4545
Moore Enterprises ph: 978-597-0204
TDS Telecom ph: 888-837-1347
US Cellular - Nashua ph: 533-2070

Tire Dealers

Carson City Tire, Inc. ph: 673-5402

Tractor Sales & Service

B - B Chain, Inc. ph: 673-3455
Chappell Tractor Sales ph: 673-2640

Trash Removal

H2O Waste Disposal Services, LLC ph: 732-0961

Travel Agencies

Rainbow Cruises ph: 672-9511

-U-

U.S. Military

Amy National Guard - Milford ph: 673-3784
Employer Support for the Guard and Reserves
ph: 225-1342

Utilities

Public Service of New Hampshire ph: 634-2380

-V-

Veterinary Medicine & Surgery

Hollis Veterinary Hospital, PLLC ph: 465-7071
Ponemah Veterinary Hospital ph: 673-5300

-W-

Website Development

ATurnKeyWebsite.com ph: 978-449-0069
Patelligence ph: 781-367-8072
Robin Warren Website Design ph. 424-0814

-Y-

Youth Clubs & Organizations

Souhegan Valley Boys & Girls Club ph: 673-6820

SAVE THE DATE

Best of Souhegan Expo 2009 - New Site Means Limitless Possibilities
October 22 will be a red letter day for the Souhegan Valley and beyond! The Expo has "exploded" into the largest event in all of Southern New Hampshire.

MEMBER SERVICES

	Members	Non-Mems.	Newsletter Size	Advertising* 1 Issue	Prepaid 12 Months
Newsletter Subscription	Free	\$15/yr.			
Chamber Conf. Rm.	Free	\$50.	Business Card	\$25.	\$250.
Certificate of Origins	Free	\$35.	1/4 Page	\$35.	\$350.
Relocation Packages	Free	\$10.	1/2 Page	\$60.	\$600.
Member Mailing Labels (1st Set)	Free	\$35.	Back Page	\$100.	\$1,000.
Event Announcements	Free	\$25.	Full Page Inside	\$100.	\$1,000.
Welcome Bags			Insert **	\$75.	\$750.
One Sheet/Item	\$50.	\$100.			

* Prices for camera ready artwork. Design service available at additional fee.

** Must supply enough inserts to meet newsletter distribution.

Stand out in our directory with an extended listing!
For just an additional \$48 annually you can have your logo, tag line,
address, and fax number added to our directory.

Contact the Chamber for more details.

WWW.SOUHEGAN.NET • 673-4360

SEPTEMBER

Sunday	Monday	Tuesday	Wednesday	Thursday	Friday	Saturday
	31 8:00 Ambassador/ Membership	1	2	3	4	5
6	7 Labor Day – Office Closed	8 7:00 AM SV Chamber Referral Group	9 8:00 Communications Comm.	10 8:00 Board of Directors	11 8:00 Expo Comm	12
13	14 8:00 Member Orienta- tion Breakfast	15 7:00 AM SV Chamber Referral Group Open Meeting	16 8:00 Nelson-Michaud Business After Hours	17	18 8:00 Expo Comm	19
20	21 Ageless Salon Grand Re-Opening, 141 Rte 101A, Amherst	22 7:00 AM SV Chamber Referral Group Readers Choice Award Reception	23	24	25 8:00 Expo Comm	26
27	28	29 7:00 AM SV Chamber Referral Group	30			

Register Now for Southern New Hampshire Expo!

**Southern New Hampshire
Expo Sponsors**

Walmart
PSNH
Bard & Boyd Insurance Agency
Ocean Bank
Sapphire Consulting
Souhegan Lighting

Souhegan Valley Chamber of Commerce
69 Route 101A • Amherst NH 03031

PRST. STD.
US Postage
PAID
Permit No. 37
Amherst, NH